

RADIO MANUFACTURERS ASSOCIATION

SUITE 701-4 AMERICAN BUILDING
1317 F STREET, N. W.
WASHINGTON, D. C.



R.M.A. DATA BUREAU
90 West Street
New York, N. Y.

Release No. 452

November 10, 1945

To
Tube Engineers:

Registration has been made by the RMA
Data Bureau of the vacuum tube type designations

2K39	(Registration No.	941)
2K41	"	"	942)
2K42	"	"	943)
2K43	"	"	944)
2K44	"	"	945)
3K21	"	"	946)
3K22	"	"	947)
3K23	"	"	948)
3K30	"	"	949)

as defined by the characteristics and ratings given
in the attached data on application of

Sperry Gyroscope Company, Inc.
Great Neck, L.I., N.Y.

Respectfully yours,

RMA DATA BUREAU

By

A handwritten signature in dark ink, appearing to read "J. C. ...", is written over a horizontal line. The signature is cursive and somewhat stylized.

LCFHorle/CAP



**RADIO MANUFACTURERS ASSOCIATION
ENGINEERING DEPARTMENT**

RMA TYPES

Release No. 452

November 10, 1945

2K41
2K42
2K43
2K44
2K39

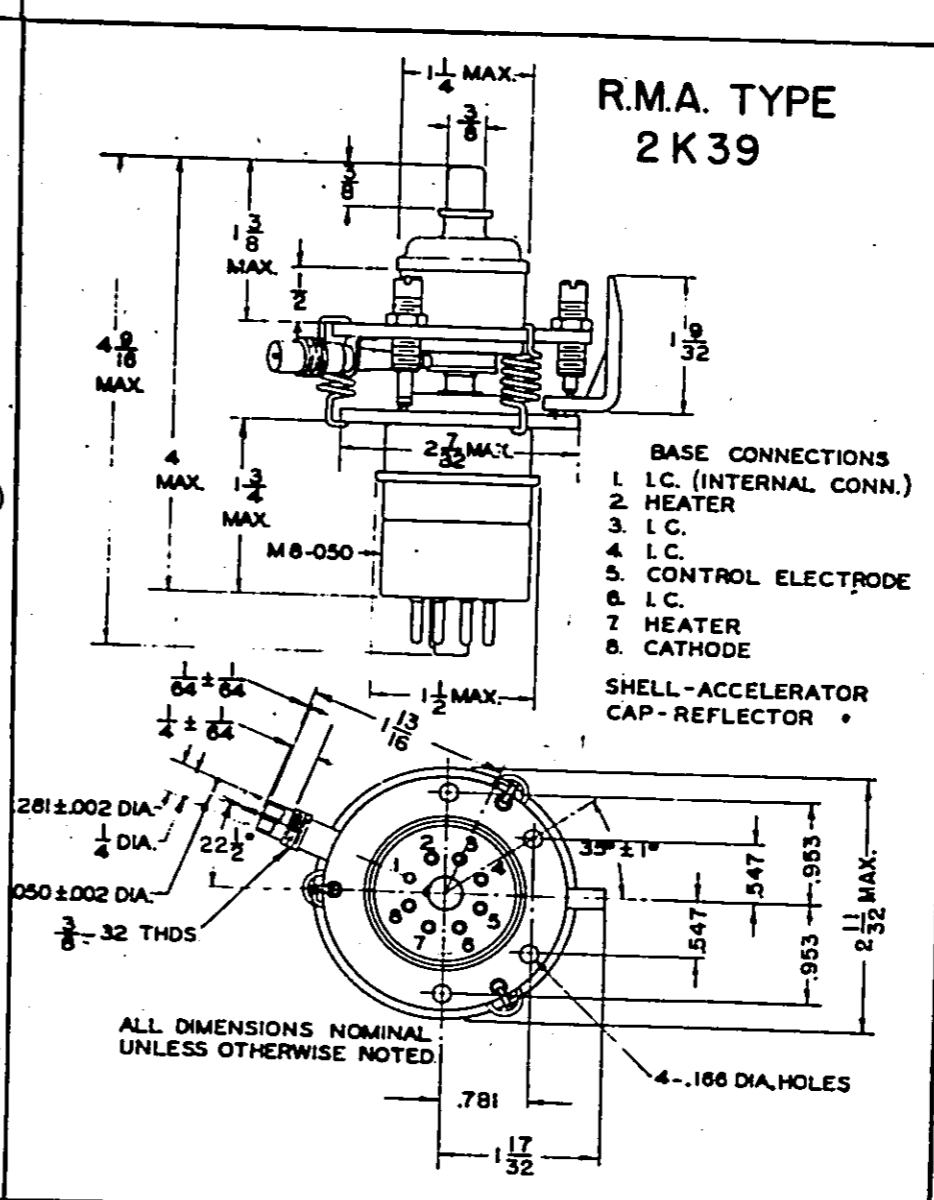
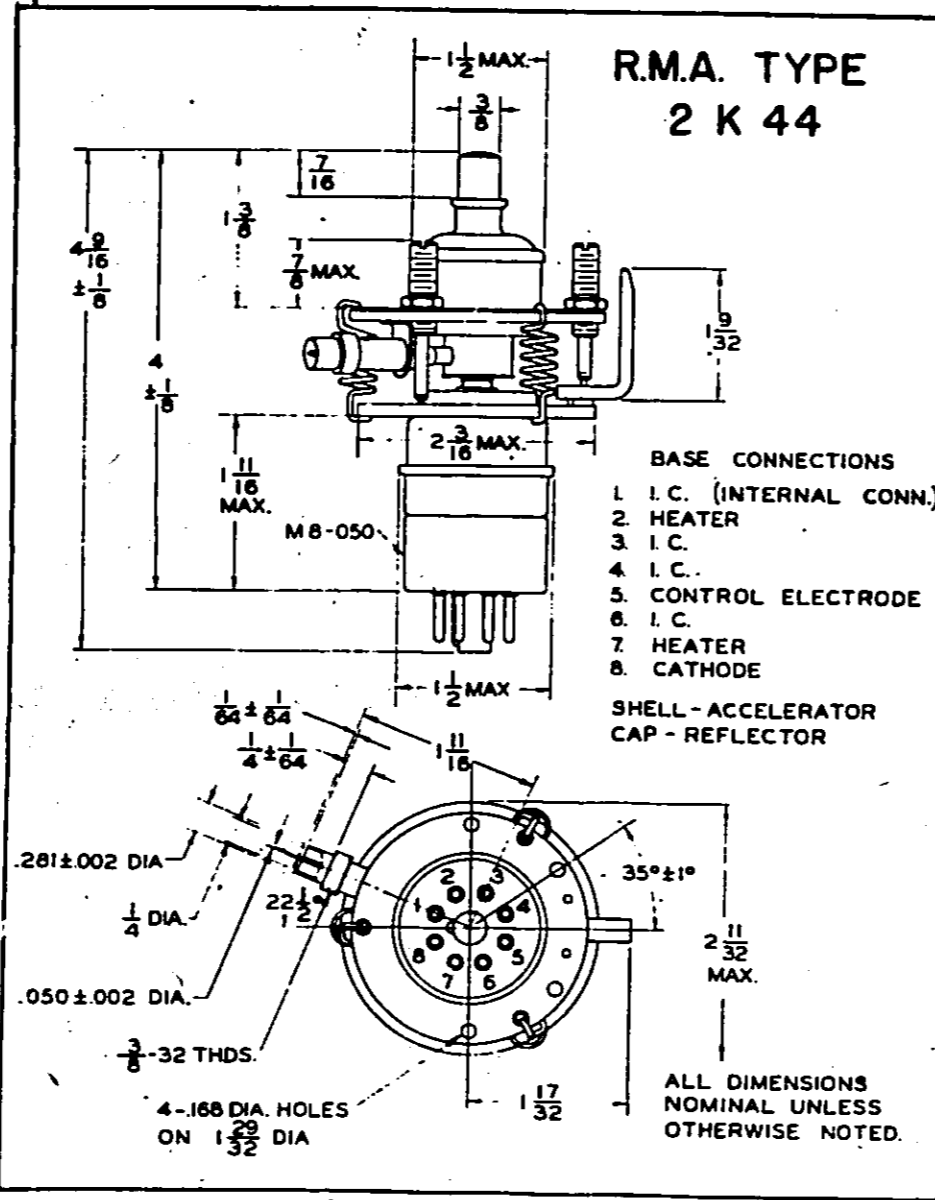
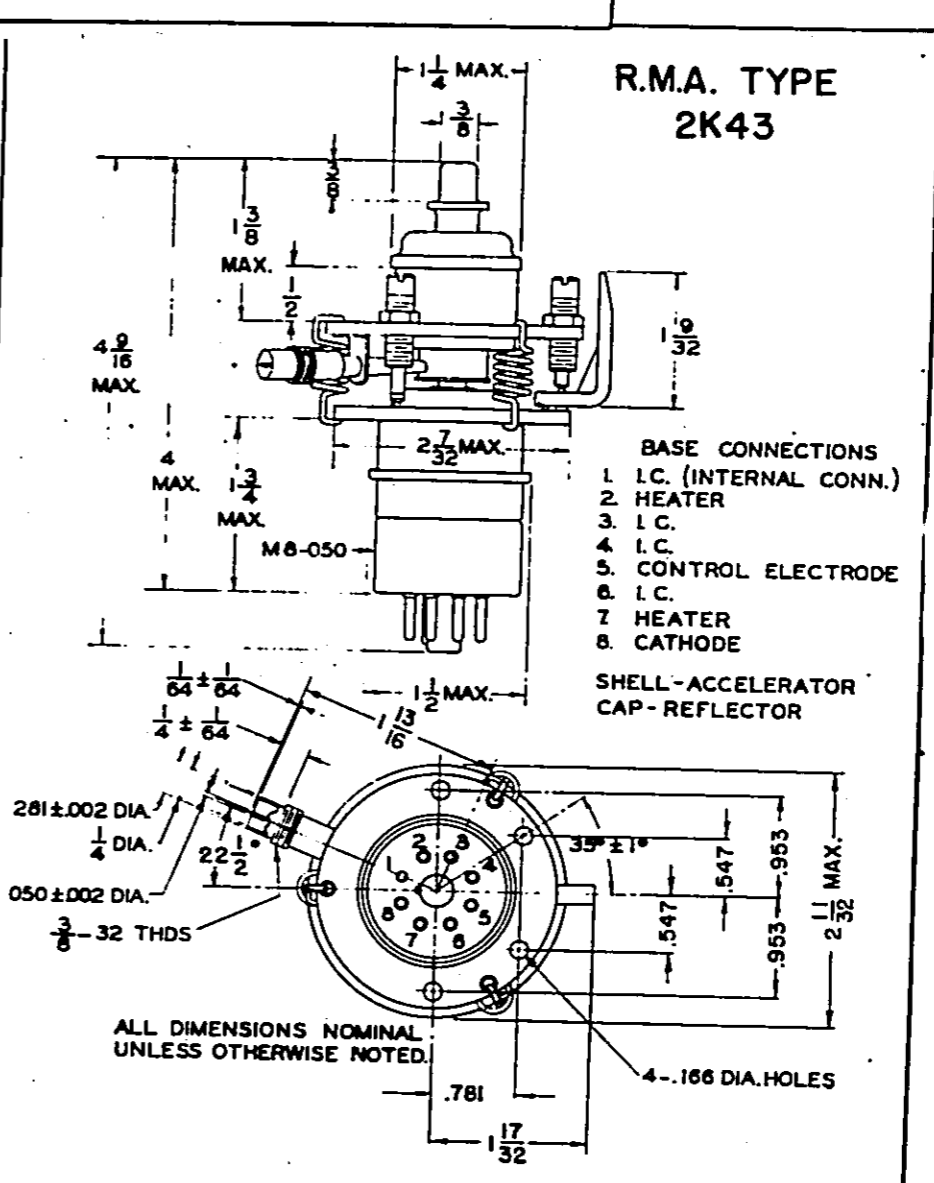
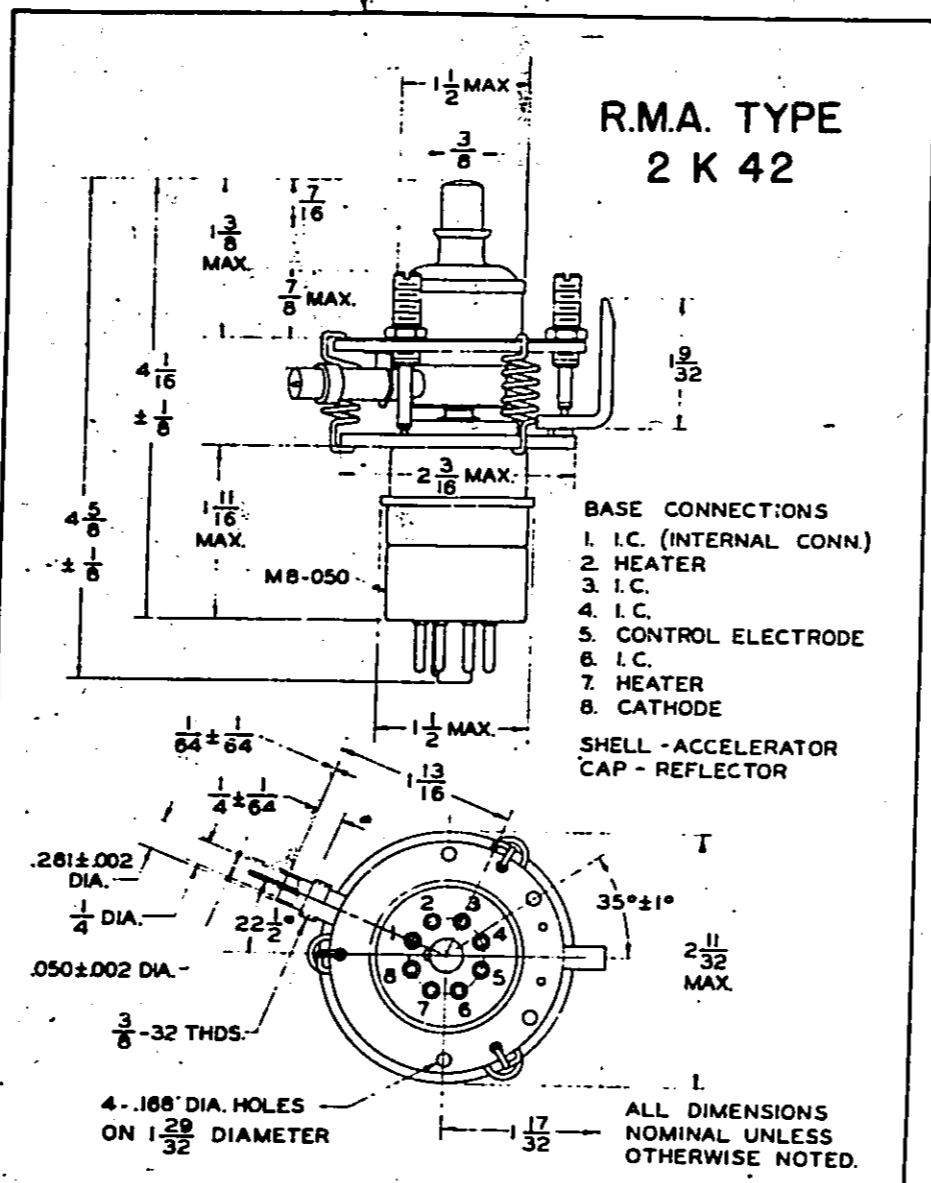
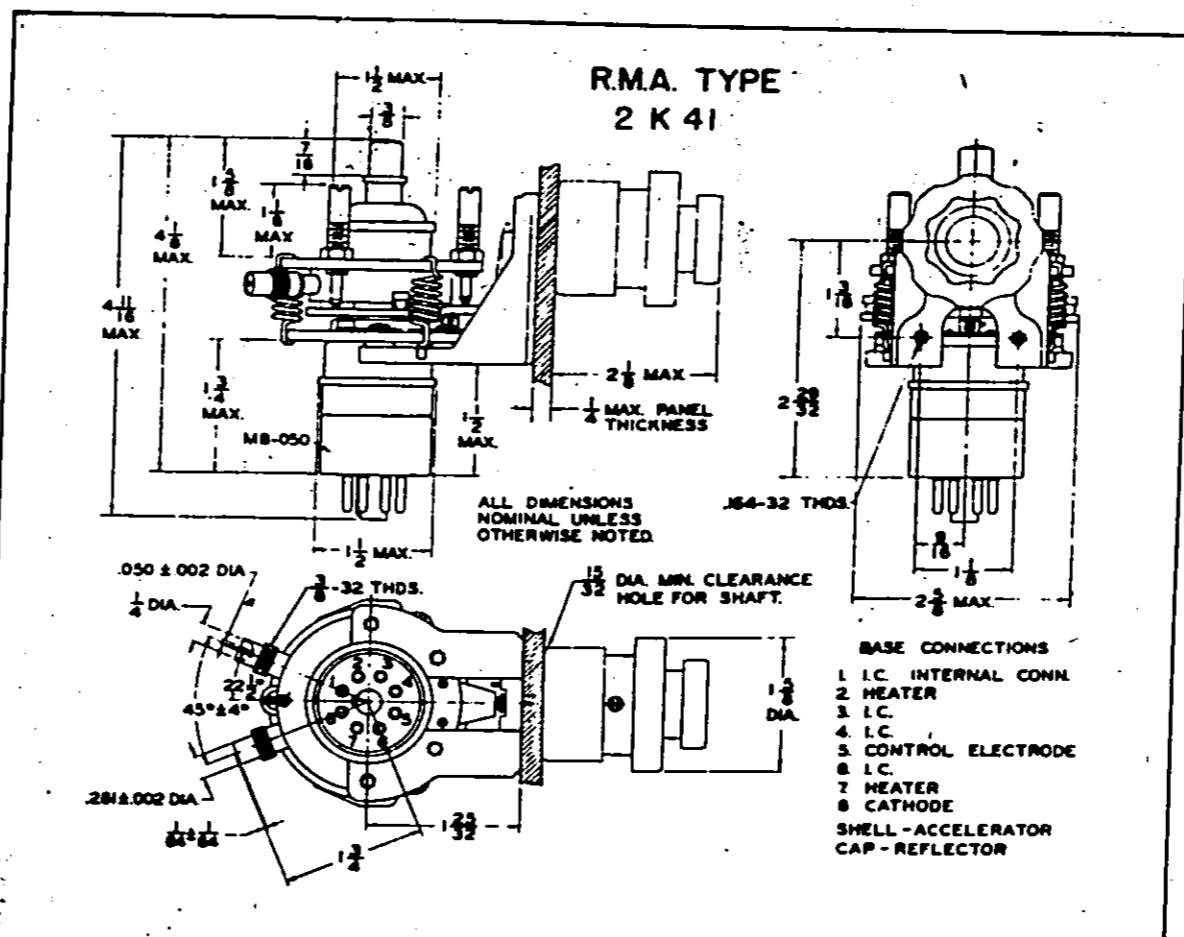
Type Designation	2K41	2K42	2K43	2K44	2K39
Reservation No.	5159	5160	5161	5162	5133

Maximum Ratings

Acceleration voltage	Volts d-c	1250	1250	1250	1250	1250
Beam current	Ma	60	60	60	60	60
Beam power input	Watts	75	75	75	75	75
Control electrode voltage	Volts d-c	± 50 to -200	± 30 to -200	± 30 to -200	± 30 to -200	± 30 to -200
Control electrode current	Ma	25	15	15	15	15
Reflector voltage (Referred to cathode)	Volts	-750	-750	-750	-750	-750
Reflector current, normally zero	Ma	2	2	2	2	2
Mechanical tuning range	Mc	2660 to 3310	3300 to 4200	4200 to 5700	5700 to 7500	7500 to 10300
Electronic tuning range (Depends on mode)	Mc	10	15	20	30	40
Temperature stability (-10°C to +40°C)	Mc	6	5	5	5	5
R.F. Power Output minimum over band, into best load	Milliwatts	250	250	250	250	250

Tube dimensions.

See outline drawings.





**RADIO MANUFACTURERS ASSOCIATION
ENGINEERING DEPARTMENT**

RMA TYPES

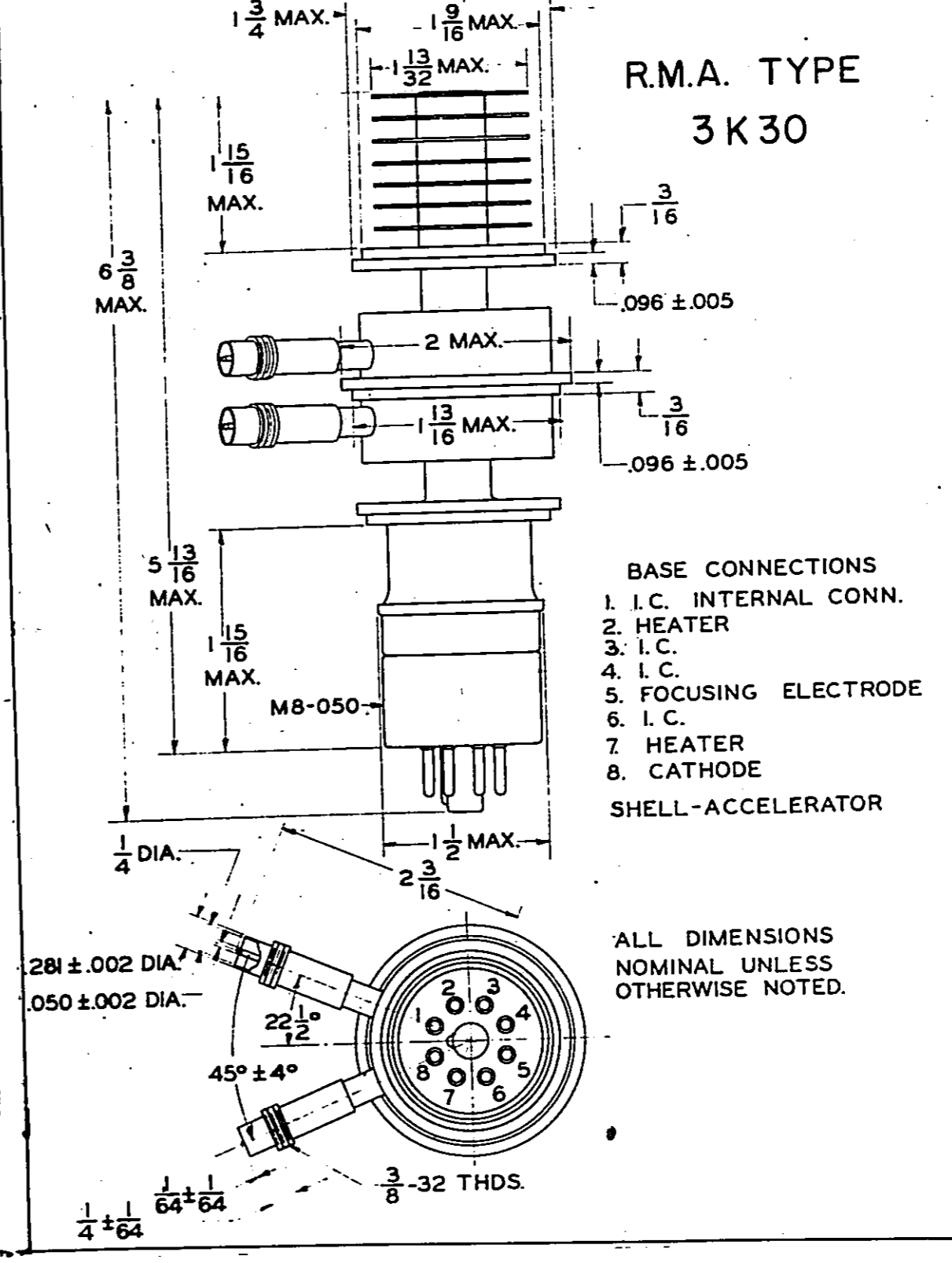
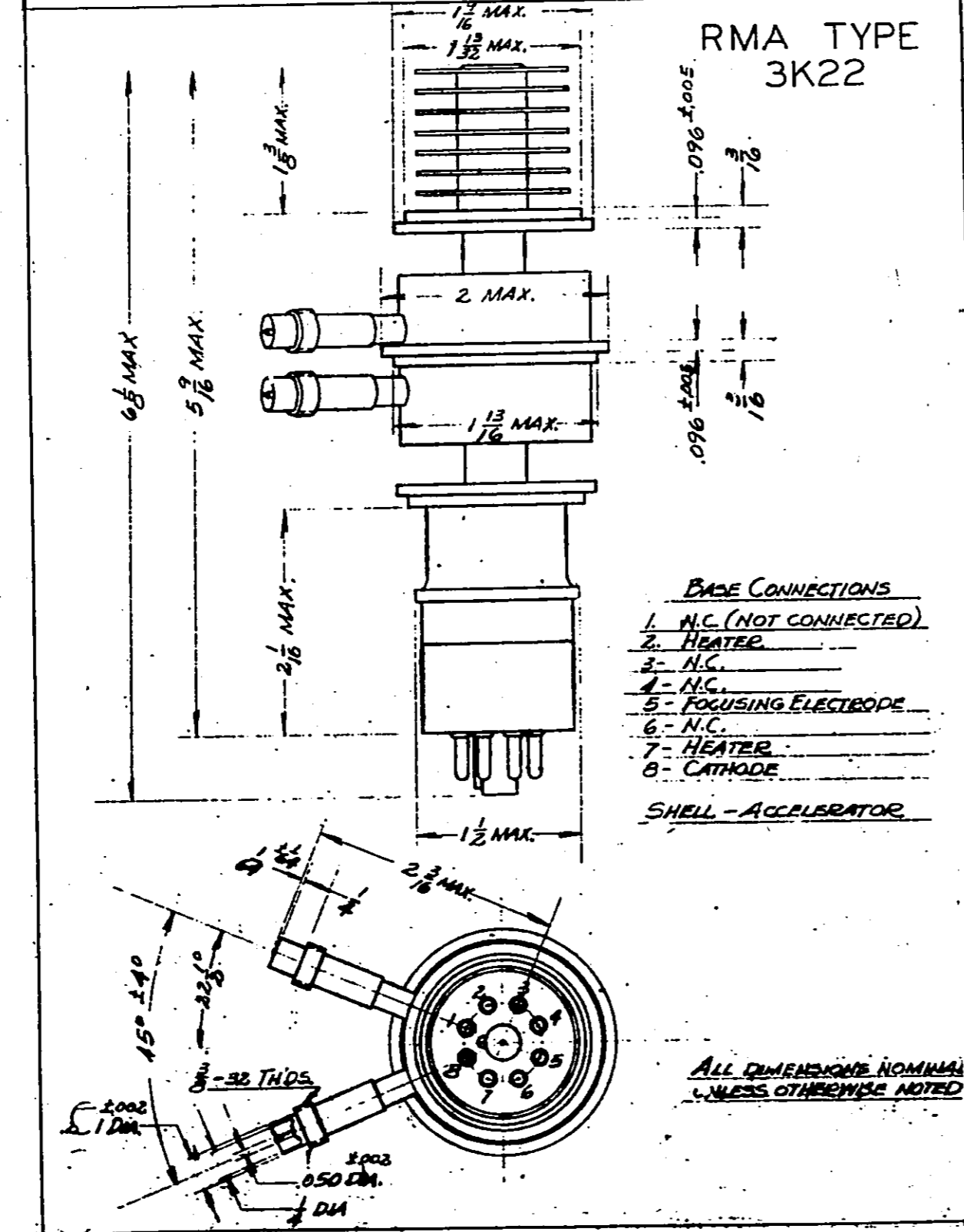
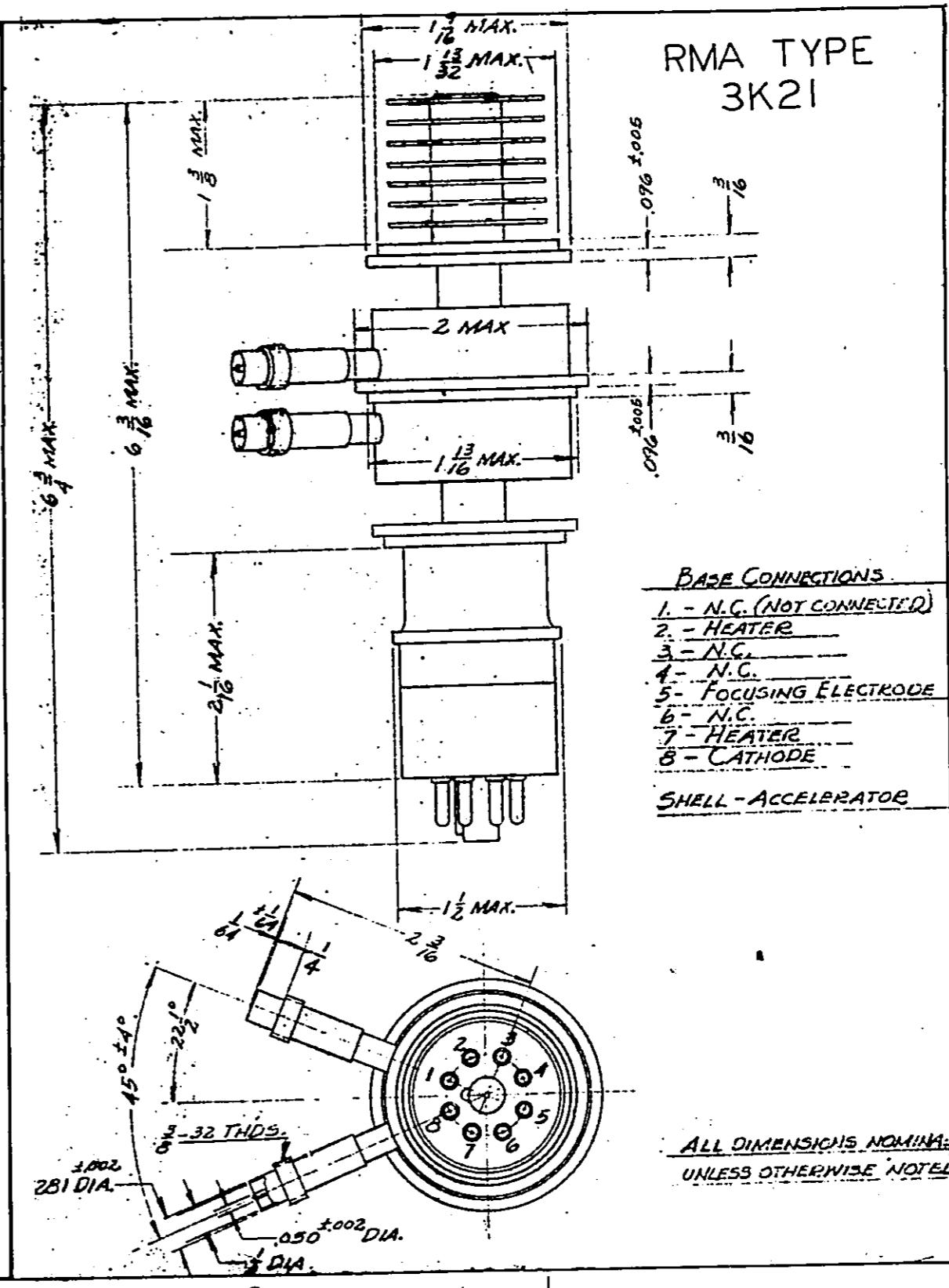
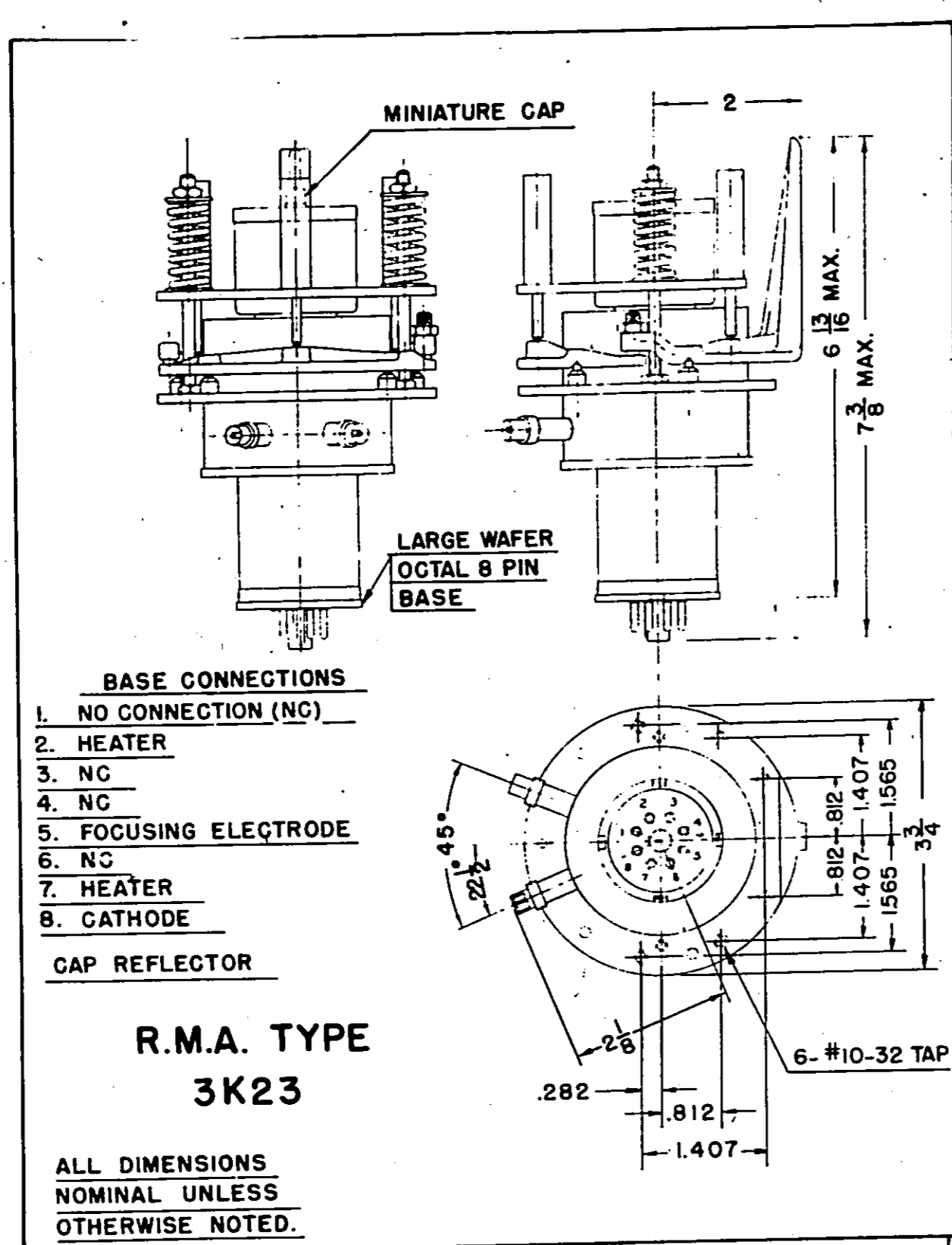
Release No. 452

November 10, 1945

3K23
3K21
3K22
3K30

Type Designation		3K23	3K21	3K22	3K30
Reservation No.		5213	5157	5158	5217
Type Tube		Reflex	2-cavity	2-ca.	2-cavity
Maximum Ratings					
Acceleration voltage	Volts d-c	1000	3000	3000	3000
Beam current	Ma	90	150	150	150
Beam power input	Watts	80	450	450	450
Control electrode voltage	Volts d-c	-20 to -200V.	0 to -200	0 to -200	0 to -200
Control electrode current	Ma	4.0	3.0	3.0	3.0
Reflector voltage (referred to cathode)	Volts	-1500	---	---	---
Reflector current, normally zero	Ma	2	---	---	---
Mechanical tuning range	Mc	950 to 1150	2300 to 2725	3330 to 4000	2700 to 3330
Electronic tuning range (Depends on mode)	Mc	a) 4 b) 10	10	10	10
Temperature stability (-10°C to +40°C)	Mc	1	---	---	---
R.F. Power Output maximum		1 - 5	20-40	20-40	20-40
Tube dimensions		See outline drawings.			

a) high power mode
b) low power mode



RADIO MANUFACTURERS ASSOCIATION

SUITE 701-4 AMERICAN BUILDING
1317 F STREET, N.W.
WASHINGTON, D. C.



R.M.A. DATA BUREAU
90 West Street
New York, N. Y.

Release No. 452A

June 20, 1947

To
Tube Engineers

On November 10, 1945 in Release No. 452, registration was announced of type designation

3K23

under the sponsorship of Sperry Gyroscope Company, Inc.

Sponsor now proposes reregistration of this type designation on the basis of the following modifications.

1. A miniature top cap was shown. It is now proposed to use a small top cap.
2. Base pins number 1, 3, 4 and 6 were shown as having no connections. It is proposed to list these pin numbers as having internal connections.
3. The use of an alternate protected exhaust tip-off out the side of the tube envelope as shown in the attached drawing is proposed.
4. It is proposed that the specifications of 6.3 volts (ac or dc) and 1.5 amperes as heater ratings be added to the registration data on this tube type.

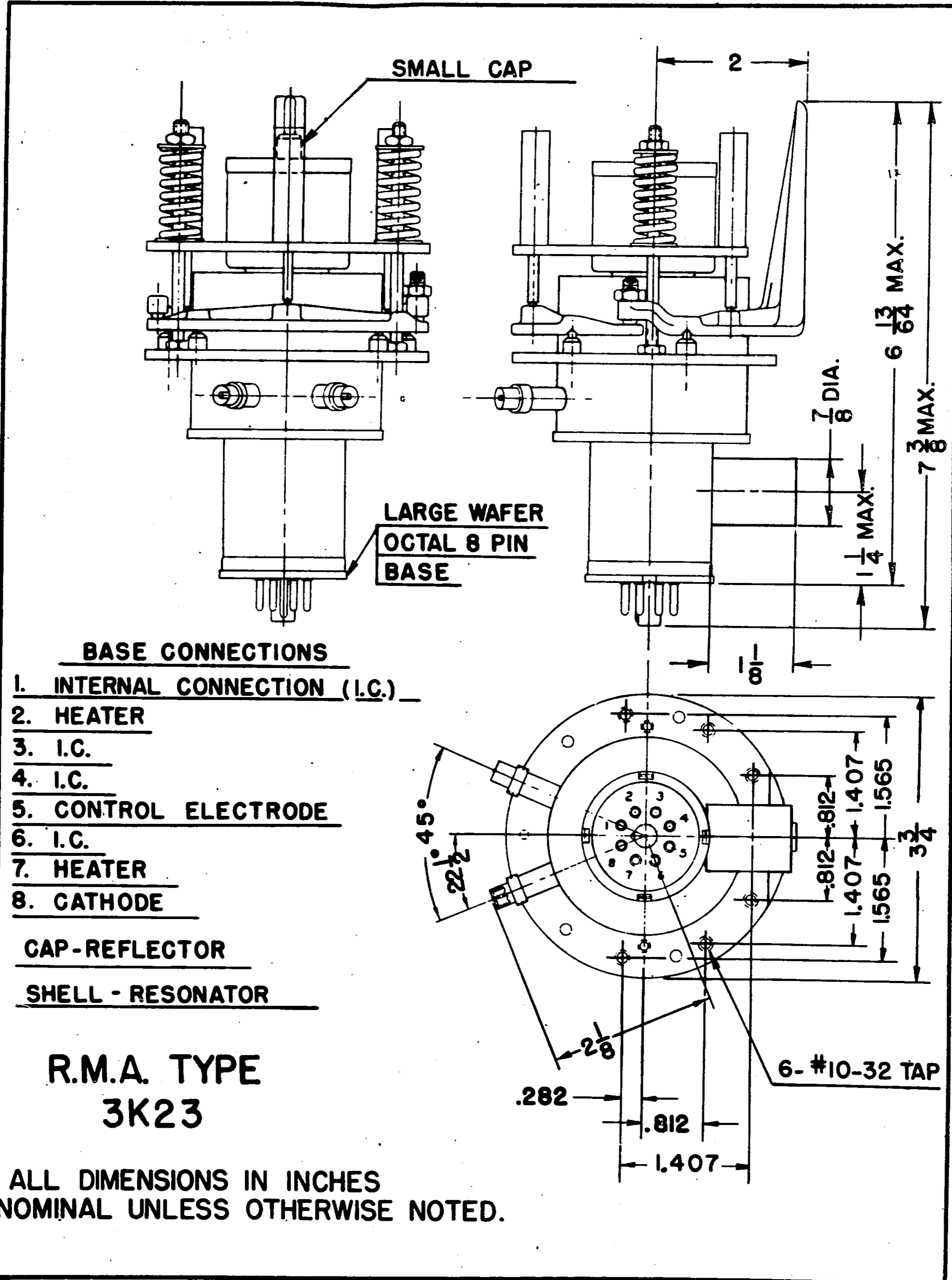
Unless valid objection to this proposal is lodged with the RMA Data Bureau prior to July 21, 1947, reregistration will be made without further announcement.

Respectfully yours,

RMA DATA BUREAU

By *J. C. A.*

LCFHorle/CAP
Enc.



RADIO - TELEVISION MANUFACTURERS ASSOCIATION
ENGINEERING DEPARTMENT



RTMA DATA BUREAU
489 Fifth Avenue
New York 17, N. Y.
MUrray Hill 2-8190

Release No. 452B

February 6, 1952.

To
Tube Engineers:

On November 10, 1945, in Release No. 452 the RTMA Data Bureau announced the registration of tube type designations

2K39
2K41
2K42
2K43
2K44

under the sponsorship of Sperry Gyroscope Company, Great Neck, New York.

Sponsor now proposes reregistration of these designations on the basis of the following modifications.

<u>Type Designation</u>	<u>Heater Current</u>	
	<u>As Registered</u>	<u>Proposed Reregistration</u>
2K39	1.3 amp.	1.0 amp.
2K41	1.3 "	1.0 "
2K42	1.3 "	1.0 "
2K43	1.3 "	1.0 "
2K44	1.3 "	1.0 "

Unless valid objection to these reregistrations is lodged with the Data Bureau prior to March 6, 1952 the indicated reregistrations will be made and appropriate announcement will follow.

Very truly yours,

RTMA DATA BUREAU

By

Ralph R. Batcher

RRBatcher:fh

RADIO - TELEVISION MANUFACTURERS ASSOCIATION
ENGINEERING DEPARTMENT



RTMA DATA BUREAU
489 Fifth Avenue
New York 17, N. Y.
MUrray Hill 2-8190

March 6, 1952

Release No. 452C

To
Tube Engineers:

On November 10, 1945, in Release No. 452 the RTMA Data Bureau announced the registration of tube type designations

2K39
2K41
2K42
2K43
2K44

under the sponsorship of Sperry Gyroscope Company, Great Neck, New York.

On February 6, 1952 in Release No. 452B, proposal to reregister the designations on the basis of modifications there stated, was made.

No valid objection to this proposal having been received this reregistration has now been made with this designation.

Very truly yours,

RTMA DATA BUREAU

By Ralph R Batcher

RRBatcher:fh