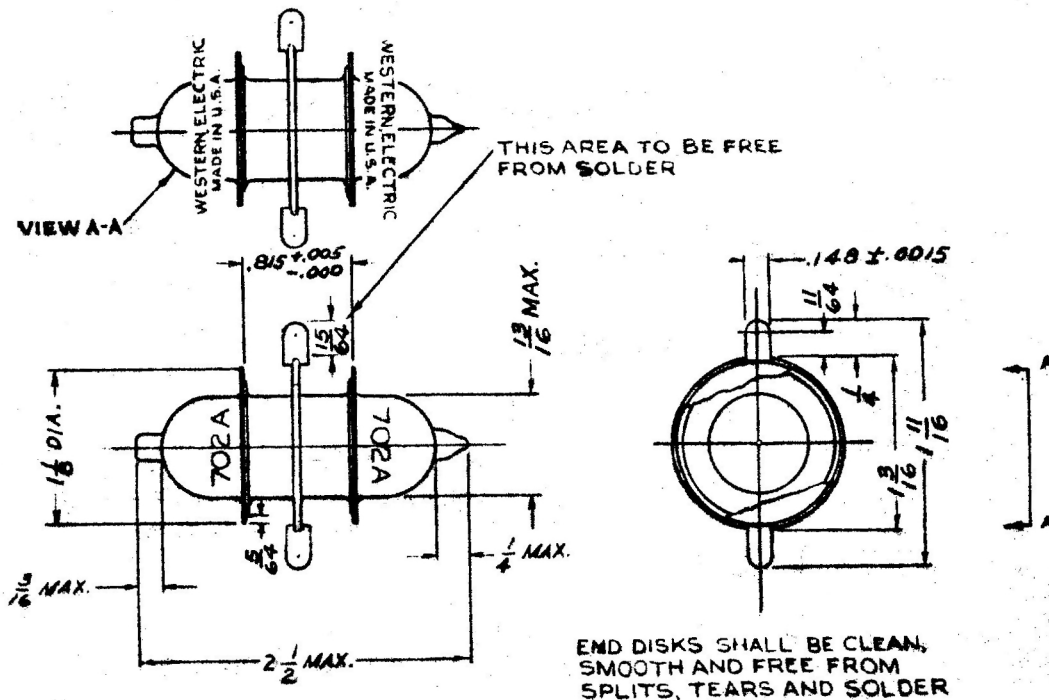


CONFIDENTIAL

TECHNICAL INFORMATION

WESTERN ELECTRIC 702A VACUUM TUBE



CLASSIFICATION

This tube is a three electrode gas discharge tube for use as a protective gap for pulsed systems using a common antennae.

MOUNTING

The tube may be mounted in any position. The electrical connections shall be such as to provide uniform contact around the peripheries of the end electrodes. The center electrode is equipped with terminals.

OPERATION

The gaps between the electrodes may be operated in series or in parallel. Special types of mounting circuits are required for each application.

RATINGS

Approximate gap breakdown voltage	500 volts
Safe electrode dissipation (each)	5 watts
Total electrode dissipation	15 watts