



CPM-Channel Photomultiplier C 1984

Serial Number:	C1344-71
Type of Photocathode:	Low Noise Bialkali
Faceplate Material:	Borosilicate
Spectral sensitivity:	300 - 650 nm
Cathode sensitivity @ 410 nm:	14,70%
Gain @ 2000V:	1,60E+07
Dark current @ 2000V:	160,7 pA
Bias Current @ 2000V:	37 μ A

06.12.13

CAUTION

High light levels can damage the photocathode permanently. When high voltage is applied, it has to be assured, that maximum signal current will not exceed the value of 10 μ A (max. 30 sec).

High Voltage Warning:

This product is operated at high voltage. Extreme care must be taken to ensure operator's safety and to avoid damage to other instruments. Avoid direct contact with the photomultiplier when high voltage is applied. Keep at least 5 mm space around the cathode when operated with negative high voltage.

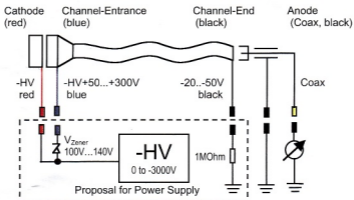


Fig. 1
Typical application circuit when using a **negative** high voltage supply (0 to -3000 volts)

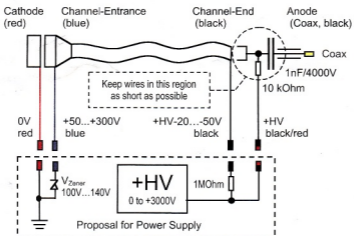


Fig. 2
Typical application circuit when using a **positive** high voltage supply (0 to +3000 volts)