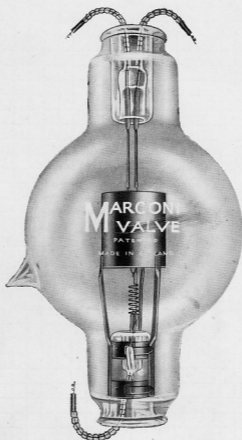


# Rectifying Valve

TYPE M.R.1

(Nickel Electrodes)



2343A

(Approximate overall dimensions : 185 × 100m/m.)

A two-electrode rectifying valve, tested dissipating, 200 watts at the anode, suitable for voltages up to 10,000.

Continuous anode dissipation permissible in operation 100 watts.

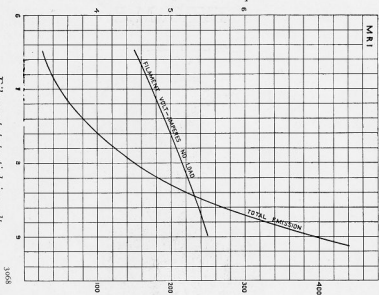
*Approximate Data :*

Filament volts ..	9.0	Total emission (milliamps.)	350
Filament amperes ..	5.75	*Impedance (ohms) ..	1,500
Anode volts ..	10,000		

\* Taken about anode volts 200.

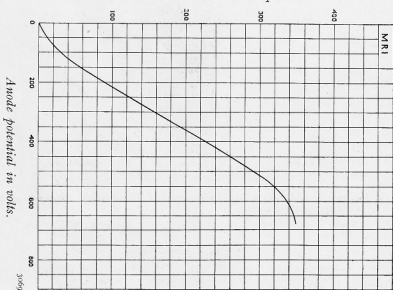
Code Word : IVLOG

Filament current in amperes.



Total emission in milliamperes.

Anode current in milliamperes.



Anode potential in volts.

Filament potential in volts.  
Characteristic Curves of Average Valve.

TYPE M.R. I