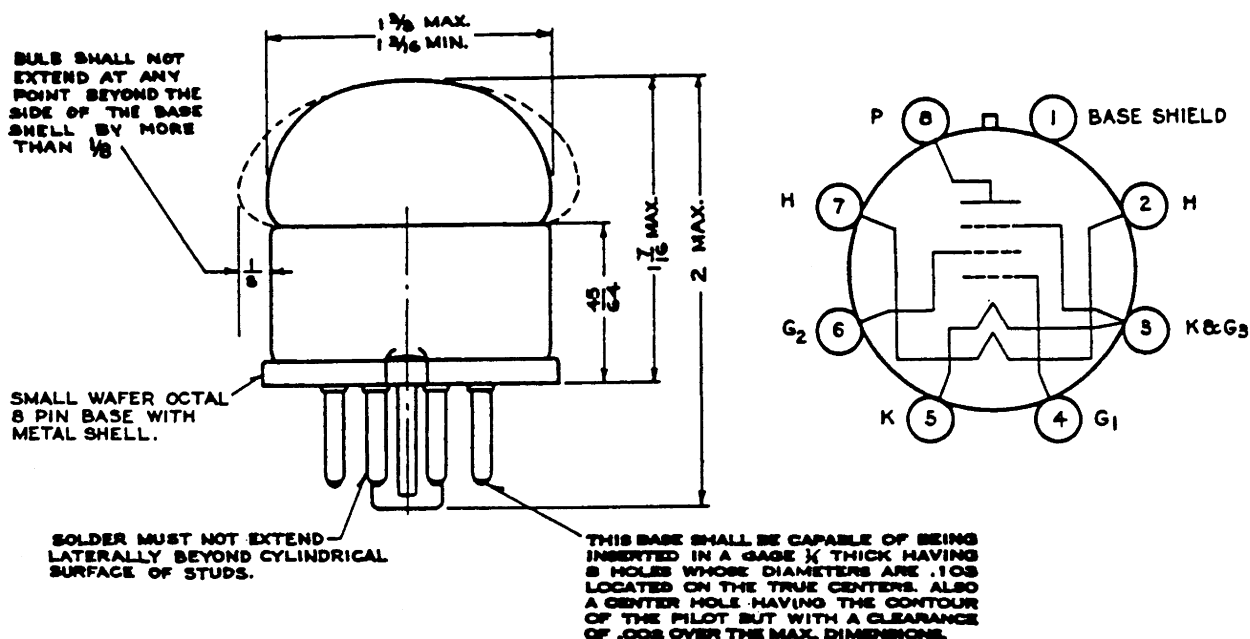


TECHNICAL INFORMATION
WESTERN ELECTRIC 717A VACUUM TUBE



CLASSIFICATION

The 717A vacuum tube is a pentode with an indirectly heated cathode. It is intended for miscellaneous low power applications at audio, high and ultra-high frequencies.

BASE AND MOUNTING

This vacuum tube employs a short, intermediate-shell, eight pin, octal base. The dimensions and arrangement of terminal connections are shown in the above drawing. The tube may be mounted in any position.

HEATER RATING

Heater potential	6.3 volts, a-c or d-c
Nominal heater current	0.175 ampere

MAXIMUM RATINGS

Maximum direct plate potential	180 volts
Maximum screen-grid potential	120 volts

OPERATING CONDITIONS AND CHARACTERISTICS

Plate potential	120	180 volts
Screen-grid voltage	120	120 volts
Suppressor-grid voltage	0	0 volts
Control-grid bias	-2	-2 volts
Plate current	7.5	7.7 milliamperes
Screen-grid current	2.5	2.4 milliamperes
Amplification factor	1560	2540
Plate resistance	0.39	0.62 megohm
Transconductance	4000	4100 micromhos

INTERELECTRODE CAPACITANCES

Control-grid to heater, cathode, screen-grid and suppressor-grid	5.3 µf
Plate to control-grid	.018 µf
Plate to heater, cathode, screen-grid and suppressor-grid	3.6 µf

FOR IMMEDIATE REFERENCE ONLY
REISSUES WILL NOT BE FURNISHED
UNLESS SPECIFICALLY REQUESTED

