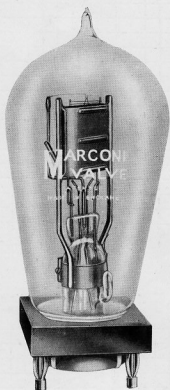


J. G. REED
J. W. A. LTD.
SPRING V. S. N.

Transmitting Valve

TYPE D.E.T.1

(Dull emitter)



3062

(Approximate overall dimensions: 180 × 78 m/m.)

Normal input 80 milliamperes mean anode current at 1,000 anode volts D.C. when used in a suitable circuit under oscillating conditions on a long wave telegraphic load in which the method of keying reduces the anode current to zero during spacing.

Maximum continuous anode dissipation under oscillatory conditions 35 watts.

Approximate Data :

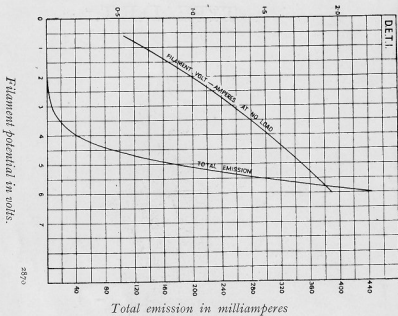
Filament volts	6.0	*Impedance (ohms)	6,500
Filament amperes	1.9	*Amplification factor	11
Anode volts D.C.	1,000		

* Taken about anode volts 500 and grid volts 0.

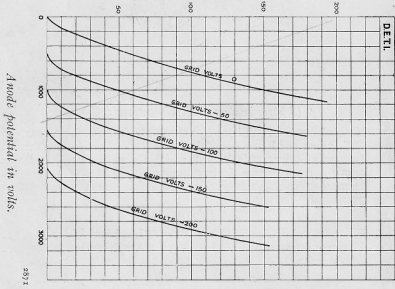
Code Word : IVJYE

J. C. REED
 A. W. A. LTD.
 SYDNEY N. S. W.

Filament current in amperes.



Anode current in milliamperes.



Characteristic Curves of Average Valve.

TYPE D.E.T.1