

CONTINUOUS-WAVE MAGNETRON

Continuous-wave air-cooled packaged magnetron intended for microwave heating applications.

QUICK REFERENCE DATA

Frequency, fixed within the band	f	2,425 to 2,475 GHz
Output power	W_o	2,0 to 2,5 kW
Construction	packaged	
Anode supply		unfiltered single-phase full-wave, or three-phase half-wave rectified

CATHODE

HEATING

TYPICAL CHARACTERISTICS

LIMITING VALUES AND OPERATING CONDITIONS

TEMPERATURE LIMITS

COOLING

Anode block

Required quantity of air

Cathode radiator, via air duct

See YJ1160

forced air

see cooling curve

low-velocity air flow
($> 0,2 \text{ m}^3/\text{min}$)

MECHANICAL DATA

Dimensions in mm

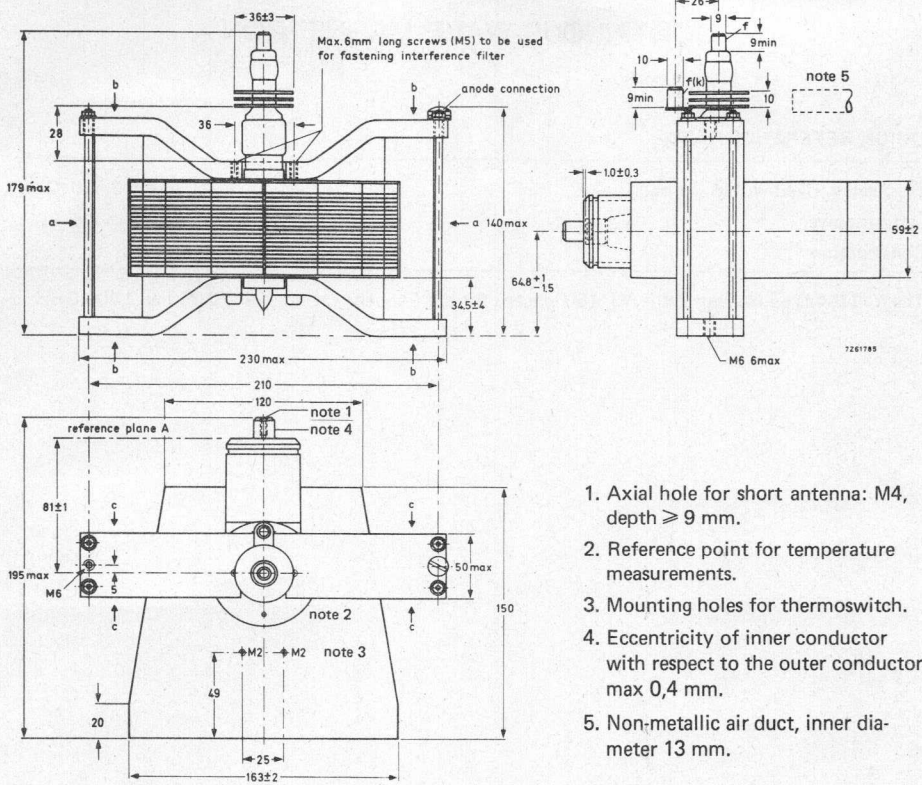


Fig. 1.