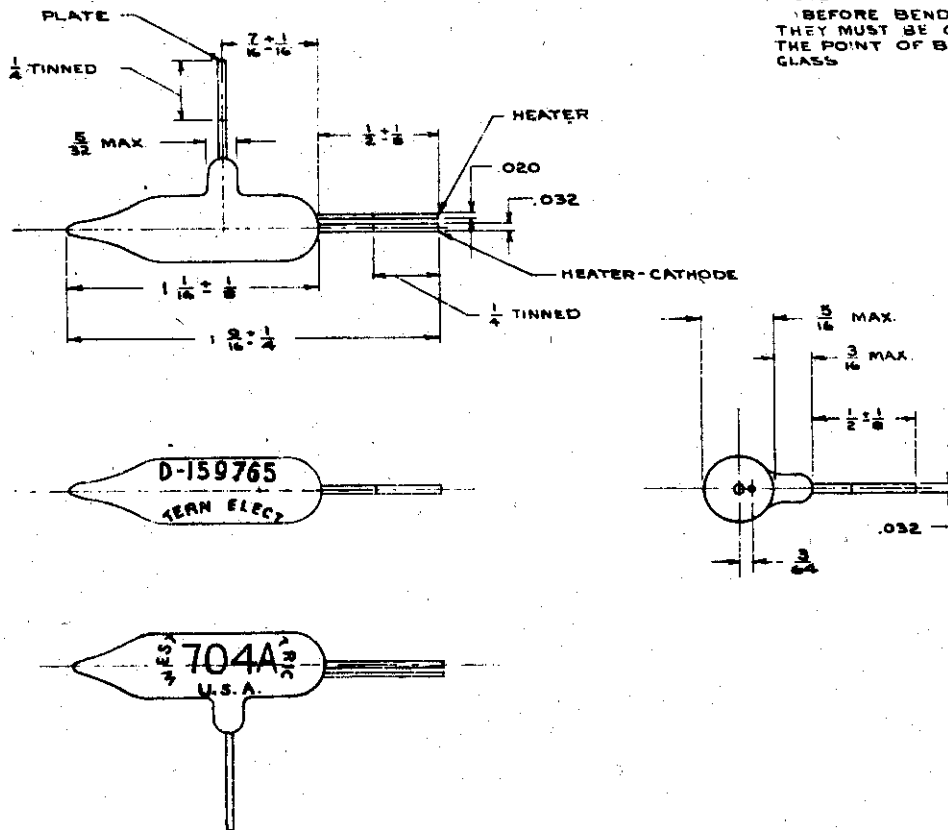


TECHNICAL INFORMATION
WESTERN ELECTRIC 704A VACUUM TUBE



CLASSIFICATION

The 704A vacuum tube is an indirectly heated cathode-type diode, intended for ultra high frequency applications.

GENERAL

No base is provided. One side of the heater and the cathode are common and, with the other side of the heater, project from the end of the bulb. The plate lead is brought out from the side of the bulb. The tube may be supported by these leads provided flexibility is maintained so that no glass strains are produced. Connections to the leads may be made by screws, clamps or soldering; but in the latter method precautions must be taken to avoid excessive heat to the leads or contact between glass and soldering iron.

HEATER RATING

Heater voltage	4.5 volts, a.c. or d.c.
Nominal heater current	0.50 ampere

MAXIMUM RATINGS

Maximum peak inverse voltage	1500 volts
Maximum average direct plate current	10 milliamperes
Maximum peak plate current	50 milliamperes

NORMAL CHARACTERISTICS

Plate voltage	10 volts
Average plate current	5.5 milliamperes

INTERELECTRODE CAPACITANCE

Plate to heater and cathode	0.75 μ f
-----------------------------	--------------