



SB256

SB256

SELECTIVE ELECTROSTATIC STORAGE TUBE

256 BI-VALUED SIGNALS

VISUAL READOUT

RANDOM ACCESS

UNLIMITED STORAGE TIME

BI-VALUED ADDRESS SIGNALS

For use in electronic computing machines

DATA

General:

Heater, for Unipotential Cathode:

Voltage 50. ± 5% ac or dc volts

Current 0.62 amp

Direct Interelectrode Capacitances (Approx.):

Writing Plate to all other electrodes 112 μf

Reading Plate to all other electrodes 56 μf

Storage Element to Writing Plate 0.8 μf

Storage Element to Collector Plate 0.8 μf

Reading Wire 20 μf

Bias Select Bars 0 volts

Cutoff Voltage:

H Bars Collector Voltage

V Bars ¼ Collector Voltage

Collector Voltage 175 volts

Faraday Cage Voltage 300 to 900 volts

Reading Wire Voltage above Faraday Cage 150 volts

Reading Plate:

Bias 350 volts

Pulse 0 volts

Writing Plate:

Bias 0 volts

Writing Pulse 100 volts

Cathode Current:

All gates open 100 ma

One gate open 350 μa

Phosphor: P1

Fluorescence Green

Phosphorescence Green

Persistence Medium

Overall Length 9-1/2" ± 5/8"

Greatest Diameter of Bulb 3"

Weight (Approx.) 2 lbs

Operating Position Any

This Document:

Authenticity none

Accuracy best effort

Socket Alden Part No. 435SBA

Base Thirtyfivar 35-Pin
(JETEC No. E35-16)



SB256

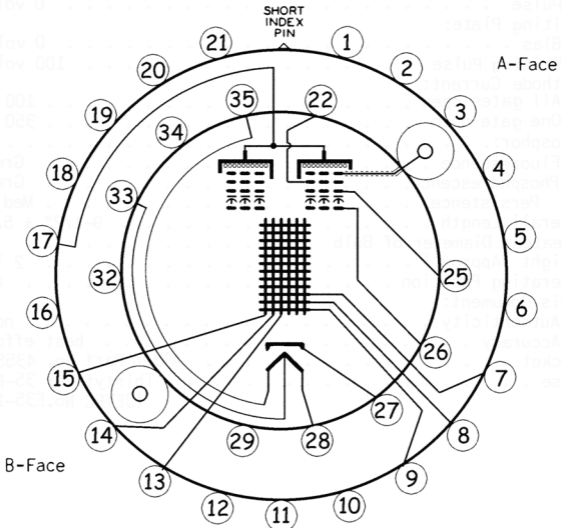
SB256

SELECTIVE ELECTROSTATIC STORAGE TUBE

BOTTOM VIEW

- | | |
|-----------------------|------------------------|
| Pin 1 - H1 Bar | Pin 22 - Read Plate A |
| Pin 2 - V1' Bar | Pin 23 - Shield A |
| Pin 3 - V2 Bar | Pin 24 - Output A |
| Pin 4 - V2' Bar | Pin 25 - Write Plate A |
| Pin 5 - H2 Bar | Pin 26 - Collector A |
| Pin 6 - Faraday Cage | Pin 27 - Cathode |
| Pin 7 - H4' Bar | Pin 28 - Heater |
| Pin 8 - H2' Bar | Pin 29 - Read Plate B |
| Pin 9 - H6' Bar | Pin 30 - Output B |
| Pin 10 - H8' Bar | Pin 31 - Shield B |
| Pin 11 - Faraday Cage | Pin 32 - Write Plate |
| Pin 12 - H4 Bar | Pin 33 - Heater CT |
| Pin 13 - V4 Bar | Pin 34 - Collector B |
| Pin 14 - V1 Bar | Pin 35 - Heater |
| Pin 15 - V3 Bar | |
| Pin 16 - H4 Bar | |
| Pin 17 - Faraday Cage | |
| Pin 18 - H3' Bar | |
| Pin 19 - H1' Bar | |
| Pin 20 - H5' Bar | |
| Pin 21 - H7' Bar | |

Pins 23/24 and 31/30 are coaxial



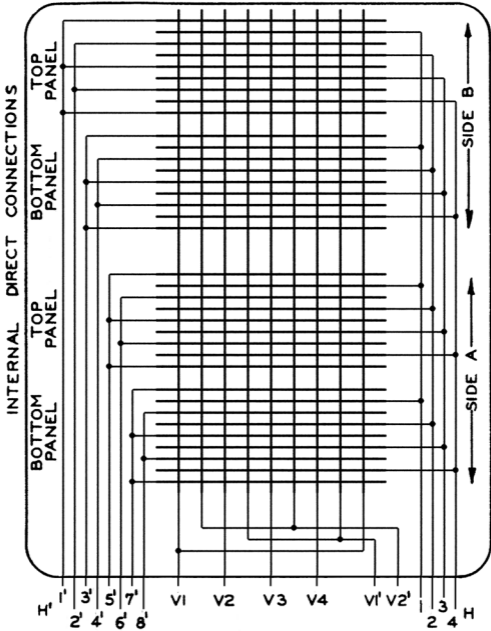


SB256

SB256

SELECTIVE ELECTROSTATIC STORAGE TUBE

Fluorescent Screen Readout Map



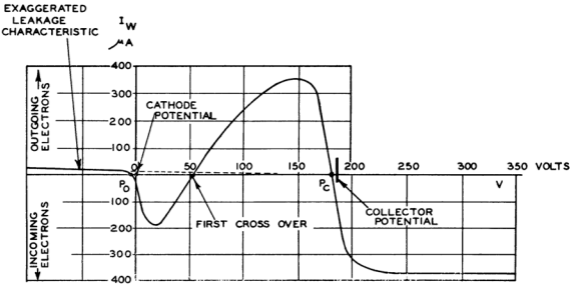


SB256

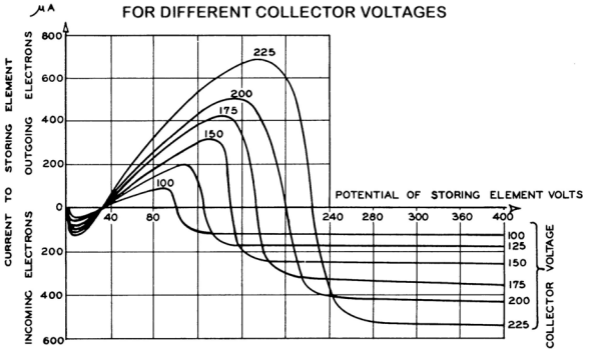
SB256

SELECTIVE ELECTROSTATIC STORAGE TUBE

CURRENT - VOLTAGE CHARACTERISTIC OF STORING ELEMENT



CURRENT - VOLTAGE CHARACTERISTICS FOR DIFFERENT COLLECTOR VOLTAGES



READING CURRENT VERSUS ELEMENT POTENTIAL

