

The data to be read in conjunction with the Hydrogen Thyatron Preamble.

**ABRIDGED DATA**

Hydrogen-filled, positive grid triode thyatron for pulse operation at high peak currents and high voltages. The tube is a commercial version of the 5949A.

Peak forward anode voltage . . . . .	25	kV max
Peak anode current . . . . .	500	A max
Average anode current . . . . .	0.5	A max
Anode heating factor . . . . .	$6.25 \times 10^9$	VApps max
Peak output power . . . . .	6.25	MW max

**GENERAL**

**Electrical**

Cathode (connected internally to mid-point of heater) . . . . .	oxide coated
Cathode heater voltage . . . . .	$6.3 \pm 5\%$ V
Cathode heater current . . . . .	18.5 A
Reservoir heater voltage (see note 1) . . . . .	4.5 V
Reservoir heater current . . . . .	3.0 A
Tube heating time (minimum) . . . . .	3.0 min

**Mechanical**

Overall length . . . . .	317.5 mm (12.500 inches) max
Overall diameter . . . . .	84.12 mm (3.312 inches) max
Net weight . . . . .	0.7 kg (1.5 pounds) approx
Mounting position . . . . .	any
Base . . . . .	pin spacing as B5F; metal shell with micalex insert
Top cap (see note 2) . . . . .	BS448-CT3

**Cooling** . . . . . natural

**PULSE MODULATOR SERVICE  
 MAXIMUM AND MINIMUM RATINGS  
 (Absolute values)**

	Min	Max	
<b>Anode</b>			
Peak forward anode voltage (see note 3) . . . . .	-	25	kV
Peak inverse anode voltage (see note 4) . . . . .	-	25	kV
Peak anode current . . . . .	-	500	A
Average anode current . . . . .	-	0.5	A
Rate of rise of anode current (see note 5) . . . . .	-	2500	A/ $\mu$ s
Anode heating factor . . . . .	-	$6.25 \times 10^9$	VApps



## MAXIMUM AND MINIMUM RATINGS (continued)

	Min	Max	
<b>Grid</b>			
Unloaded grid drive pulse voltage (see note 6)	550	1000	V
Grid pulse duration	2.0	-	μs
Rate of rise of grid pulse (see note 5)	1.8	-	kV/μs
Peak inverse grid voltage	-	450	V
Forward impedance of grid drive circuit	50	200	Ω

### Cathode

Heater voltage	6.3 ± 5%		V
Heater time	3.0	-	min

### Reservoir

Heater voltage (see note 1)	3.0	5.0	V
Heating time	3.0	-	min

### Environmental

Ambient temperature	-55	+75	°C
Altitude	-	3	km
	-	10 000	ft

## CHARACTERISTICS

	Min	Typical	Max	
Critical DC anode voltage for conduction (see note 7)	-	0.7	4.0	kV
Anode delay time (see notes 7 and 8)	-	0.25	1.0	μs
Anode delay time drift (see notes 7 and 9)	-	20	25	ns
Time jitter (see notes 7 and 10)	-	2.0	5.0	ns
Cathode heater current (at 6.3 V)	15	18.5	22	A
Reservoir heater current (at 4.5 V)	-	3.0	3.3	A

## NOTES

- The reservoir voltage must be set to within ±5% of the value marked on the tube base.
- A large area anode connector, E2V Technologies type MA360, is recommended.
- This is the maximum forward hold-off voltage imposed on the thyatron in a pulse modulator circuit. Tubes are tested at 27.5 kV peak forward anode voltage, with the charging reactor inductance and pulse forming network capacitance resonant at 500 pps. For instantaneous starting applications the maximum permissible peak forward voltage is 18 kV; this must not be reached in less than 0.04 seconds and there must be no overshoot.

- In pulsed operation the peak inverse voltage, exclusive of a spike of 0.05 μs duration, must not exceed 5.0 kV during the first 25 μs after the anode pulse.
- This rate of rise refers to that part of the leading edge of the pulse between 25% and 75% of the pulse amplitude.
- Measured with respect to cathode potential. DC negative bias must not be applied to the grid.
- Typical figures are obtained on test using conditions of minimum grid drive. Improved performance can be expected by increasing the grid drive.
- The time interval between the instant at which the rising unloaded grid pulse reaches 25% of its pulse amplitude and the instant when anode conduction takes place.
- Normally taken as the drift in delay time over a 5-minute run at full ratings between the second and seventh minutes of operation.
- The variation of firing time measured at 50% of current pulse amplitude.

## HEALTH AND SAFETY HAZARDS

E2V Technologies hydrogen thyratrons are safe to handle and operate, provided that the relevant precautions stated herein are observed. E2V Technologies does not accept responsibility for damage or injury resulting from the use of electronic devices it produces. Equipment manufacturers and users must ensure that adequate precautions are taken. Appropriate warning labels and notices must be provided on equipments incorporating E2V Technologies devices and in operating manuals.



### High Voltage

Equipment must be designed so that personnel cannot come into contact with high voltage circuits. All high voltage circuits and terminals must be enclosed and fail-safe interlock switches must be fitted to disconnect the primary power supply and discharge all high voltage capacitors and other stored charges before allowing access. Interlock switches must not be bypassed to allow operation with access doors open.



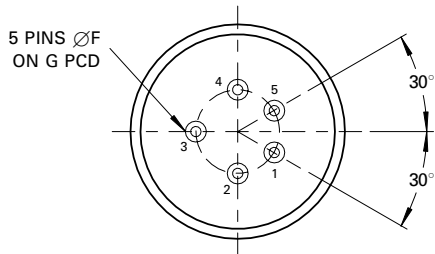
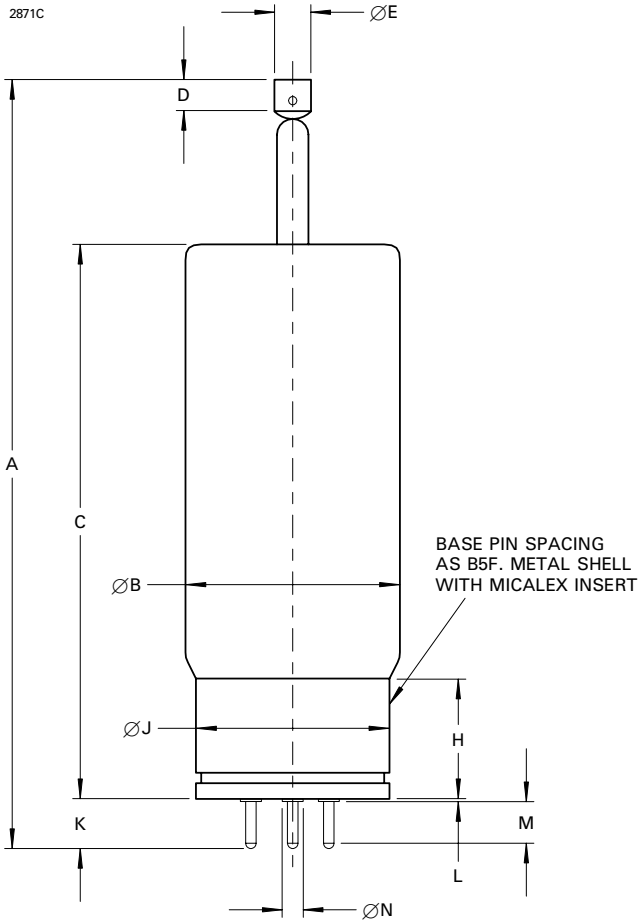
### X-Ray Radiation

All high voltage devices produce X-rays during operation and may require shielding. The X-ray radiation from hydrogen thyratrons is usually reduced to a safe level by enclosing the equipment or shielding the thyatron with at least 1.6 mm (<sup>1</sup>/<sub>16</sub> inch) thick steel panels.

Users and equipment manufacturers must check the radiation level under their maximum operating conditions.

# OUTLINE

(All dimensions without limits are nominal)

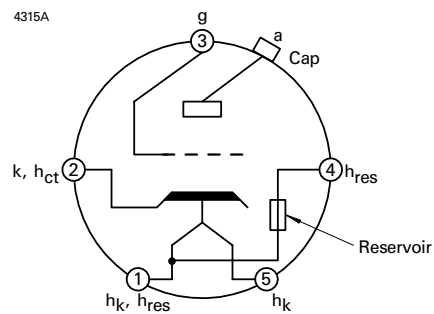


Ref	Millimetres	Inches
A	304.8 ± 12.7	12.000 ± 0.500
B	84.12 max	3.312 max
C	215.9 ± 12.7	8.500 ± 0.500
D	12.7 min	0.500 min
E	14.38 ± 0.18	0.566 ± 0.007
F	4.750 ± 0.076	0.187 ± 0.003
G	31.75	1.250
H	49.2	1.937
J	77.77 ± 1.57	3.062 ± 0.062
K	19.56 max	0.770 max
L	1.85 max	0.073 max
M	14.61 min	0.575 min
N	6.6 max	0.260 max

Inch dimensions have been derived from millimetres.

## Base Connections

Pin	Element
1	Cathode heater, reservoir heater
2	Cathode, connected internally to heater mid-point
3	Grid
4	Reservoir heater
5	Cathode heater
Top cap	Anode



Whilst E2V Technologies has taken care to ensure the accuracy of the information contained herein it accepts no responsibility for the consequences of any use thereof and also reserves the right to change the specification of goods without notice. E2V Technologies accepts no liability beyond that set out in its standard conditions of sale in respect of infringement of third party patents arising from the use of tubes or other devices in accordance with information contained herein.